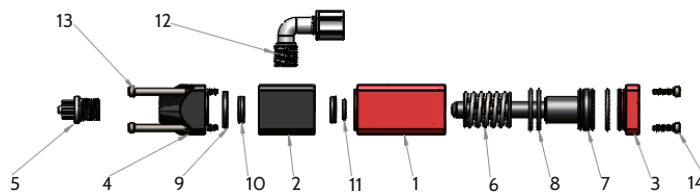
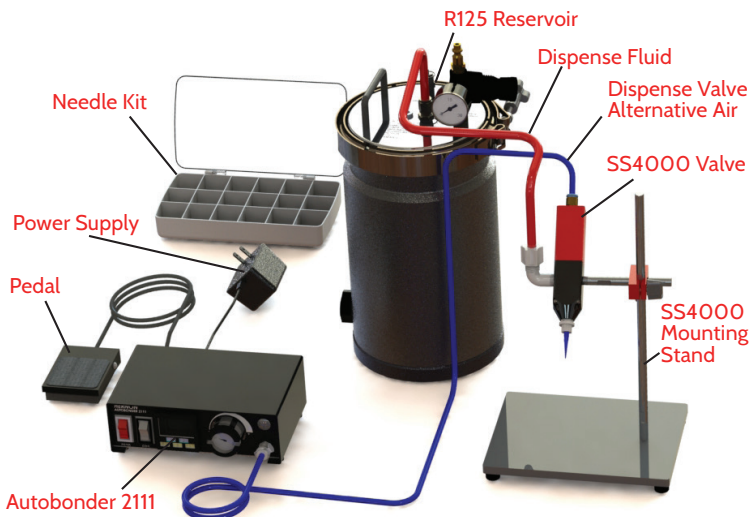




SS4000 Series Data Sheet

A Sureshot[®] 4000 series dispensing system includes the SS4000 valve, Autobonder[®] 2111 controller (pedal and power supply included), the R-125 fluid reservoir, a Sureshot[®] 4000 mounting stand and needle kit.



Item #	Part #	Description	Qty.
1	106-041	Valve Body	1
2	106-039	Valve Port	1
3	106-042	Cylinder Cap	1
4	106-043	Manifold Straight	1
5	101-025	1/4-28 Luer-Lock Needle Adaptor	1
6	109-031	SPRING S.S. 0.84 DIA x 1 1/2 LG. 0.098 WIRE	1
7	106-037	Piston	1
8	109-013	1" O.D. x 7/8" I.D. x 1/16 VITON O-RING # 020	3
9	106-040	Washer Plate	1
10	109-015	Pack Seal 3/8" ID x 5/8" OD	2
11	109-014	1/2" OD x 3/8" ID Viton O-Ring 012	1
12	101-047	1/4" NPT Male 90° x 1/4" Tube	1
13		S.S. SOCKET HEAD CAP SCREW #6-32 x 2" LG.	4
14		S.S. SOCKET HEAD CAP SCREW #6-32 x 1/2" LG.	4

Sureshot[®] 4000 Features

- Compact weight and size
- Positive shutoff
- Easy cleaning
- Low-maintenance design
- Snuff Back

Dispense Tips

Tip selection is critical to achieve optimum valve performance. SS4000 series valves are packaged with an ultra-dispensing tip kit for maximum fluid control. The kit includes smooth-flow tapered tips in sizes from 14 to 25 gauge, precision stainless steel tips in sizes from 14 to 30 gauge.

Technical Information

- Length: 4.875" (123.8mm)
- Width and Depth: 1.187" (30.2mm)
- Weight: 272 grams (9.59 oz)

Models

- Model SS4000 Aluminum piston straight, PT# 110-005
- Model SS4000 Aluminum piston 90°, PT# 110-067
- Model SS4000 Teflon[®] piston straight, PT# 110-006
- Model SS4000 Teflon[®] piston 90°, PT# 110-007

